

ONLINE AUCTION

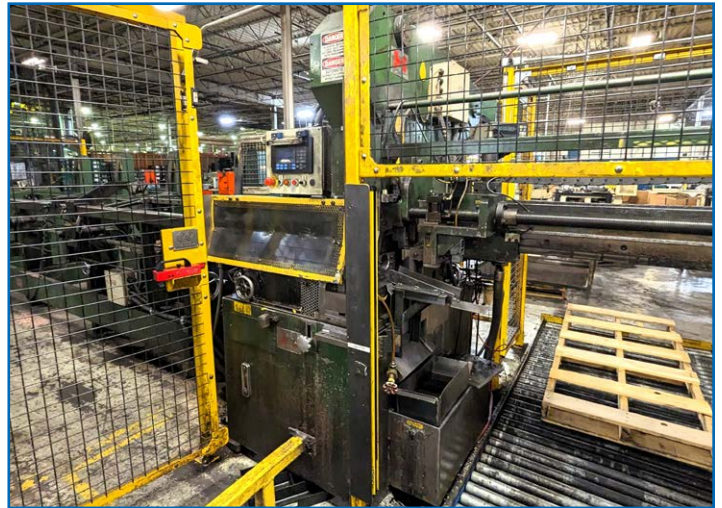


As Authorized By The Court-Appointed Receiver BDO Canada Limited
MECHTRON INNOVATIONS
Complete Perforated and Louver Type Muffler Tube Manufacturing Facility
Multifaceted Tube Bending & Forming
200 Sheldon Drive, Cambridge (Toronto), Ontario



(5+) TUBE BENDERS AVAILABLE

EAGEL EATON LEONARD VB075XP-RLH CNC TUBE BENDER

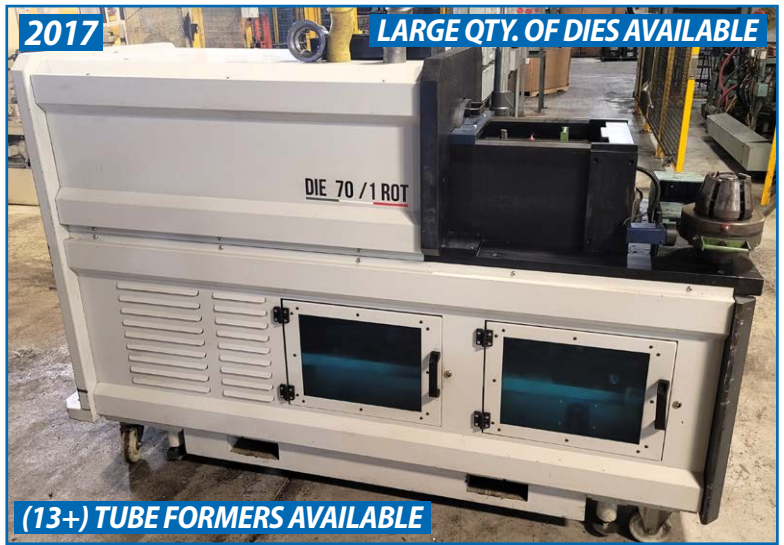


HAVEN 873 TUBE RE-CUT



4TH AXIS

HURCO VM20i CNC VERTICAL MACHINING CENTER



LARGE QTY. OF DIES AVAILABLE

(13+) TUBE FORMERS AVAILABLE

MW MILLEMIGLIA DIE 70/1 R TUBE END FORMER

CLOSES: Wednesday May 22nd, 11AM ET

Inspection: Tuesday May 21st, 9AM – 4PM or By Appointment



INFINITY
Asset Solutions

- AUCTIONS
- LIQUIDATIONS
- FINANCING
- APPRAISALS

905.669.8893
infinityassets.com

BidSpotter



(5+) TUBE BENDERS AVAILABLE



PARTIAL VIEW OF TUBE BENDERS



13+ AVAILABLE PLUS LARGE QUANTITY OF DIES

PARTIAL VIEW OF TUBE END FORMERS & DIES



(5+) AVAILABLE

PARTIAL VIEW OF DEBURRING MACHINES



LILIAN 5VU CNC VERTICAL MILL



(3) AVAILABLE

FIRST LC-1-1/2VS VERTICAL MILL



FORTUNE 1660G-D LATHE

TUBE BENDERS, FORMERS, SHEARS

LANG 5-Axis Mandrel Type CNC Tube Bender, s/n WD4105

(2) **LANG** HY 80 CNC MR 5-Axis Mandrel Type CNC Tuber Benders, MMI Multicontrol 2020 CNC Control

EAGLE EATON LEONARD VB075XP-RLH CNC Mandrel Type Tube Bender, Hydraulic Mandrel Extractor, Hydraulic Pressure Die Assist, s/n 224156EPT

PYRAMID TUBULAR TECHNOLOGIES INC. CNC Servo Hydraulic Mandrel Type Tube Bender, BendPro G2 Control w/ Tooling & Dies

HAVEN 873 Tube Re-Cut, RedLion Control, 3" Square Cap., s/n 5580 w/ 20' Bundle Loader w/ 20' Bundle Loader

VULCAN Brehm Tube Cutter, s/n VT1067-R

EAGLE / BURRMATER (Buckeye) End Former & Ram, Model 15-98155, s/n 0107

EAGLE EEE Triple Head Vise & Ram Tube End Forming Machine, Mitsubishi Control, 3 x 10HP, s/n 3440

EAGLE I/O-I/O Double End Former, Maxi-Monitor Mark-III Control, 20HP, s/n 3090

EAGLE C2000 End Former

EAGLE E85 End Former

EAGLE CEF End Former

2017 **MW MILLEMIGLIA** DIE 70/1 R Tube End Former, Siemens Simatic HMI Control, s/n 217075

(4) **ADDISON MCKEE** FM-70 ID/OD Dual Tube End Formers, Allen Bradley PanelView Plus Control

SANDERSON TL5 Automatic Tube Louvering Machine

(2) 2015/14 **SOCO** EF-AC/115-U Tube End Cam-fearing Machines, 4HP

DEBURRING MACHINES

2018 **RSA** Turnamat Deburring Machine, 1,500 – 3,000 RPM, s/n RSA-14626-10

2017 **RSA** Turnamat Deburring Machine

2006 **EWU** Rotomat Deburring Machine, s/n 1537

ADIGE HP100 Deburring Machine

DUTCHSAWS DB-76 Deburring Machine, s/n 012081

CNC VERTICAL MACHINING CENTER

2013 **HURCO** VM20i CNC Vertical Machining Center, CNC Control, 20" x 46" Table, CAT40, (20) ATC, 20HP, s/n S20-1600263DAAA w/ 4th Axis Rotary Attachment

MILLING MACHINES & LATHES

LILIAN 5VU CNC Vertical Milling Machine, Fagor 3-Axis DRO, 10" x 50" Table, s/n 1271

(3) **FIRST** LC 1-1/2VS Vertical Milling Machines, Heidenhain DRO, Power Feed & Drawbar, 9" x 42" Table

LAGUN FVA-2000 Universal Milling Machine, 18" x 80" Table

FORTUNE 1660G-D Engine Lathe, Heidenhain DRO, 10" Chuck, 8" Swing, 48" Between Centers, Tool Post, s/n 582100



(9+) AVAILABLE

PARTIAL VIEW OF SAWS

SAWS

- SOCO** HVS-400FA-DR Hydraulic Cold Saw, Digital Controls, Auto Feed, Clamping
- (2) **SOCO** VS-355FA-DR Hydraulic Cold Saws, Digital Controls, Auto Feed, Clamping
- (3) **KASTO** Cold Saws
- BEWO / DUTCHSAWS** DCH70M Cold Saw
- BEWO** 315HT/RFA/PROG Automatic Cold Saw
- 2006 **BAXTER** VERTICUT 115B Roll-In Saw

WELDING CELLS & EQUIPMENT

- 2004 **PANASONIC** VR-006 Welding Robot, 6-Axis, 6kg Payload, Model PA102S Control Panel, s/n J0484, Panasonic Weld Source Model GX-R006, Code: YA1PCR61R02, Pendant Control, Performarc Dual Pallet Enclosure, Light Curtains
- (4) Custom Welding Cells w/ **LINCOLN ELECTRIC** PowerMig 350MP Welders, s/n's U1180502034 (MEC056) & U1170707667 (MEC057))
- MAWER** Rocker Type Spot Welder, 50KVA, Medarc MedWelder 200S Control, s/n 3720.01 w/ Miller CoolMate 4 Cooling Unit
- (3) **PLYMOVENT** Fume Extractors

PUNCH PRESSES

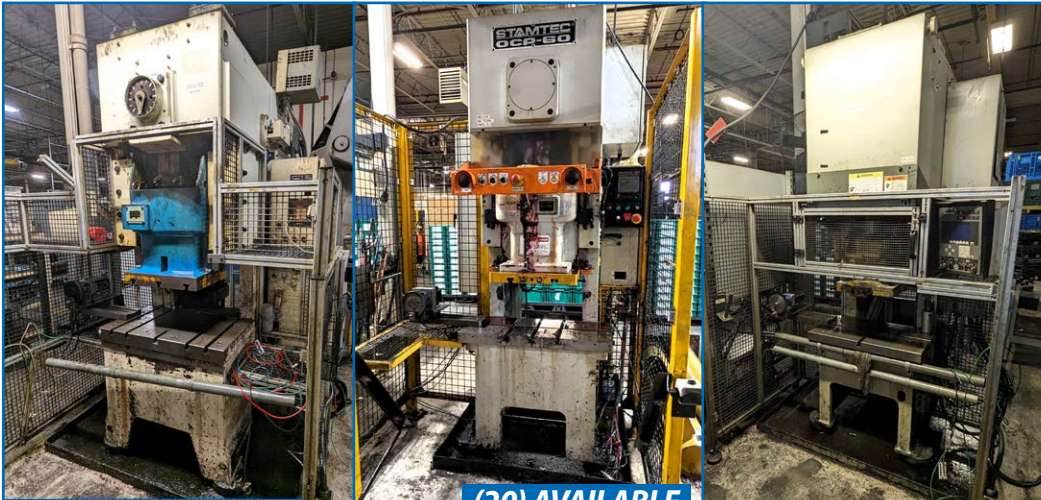
- (3) **STAMTEC** OCP-60 Punch Presses, 60-Ton Cap., 3.55" Stroke, 15.8" x 35.5" Bed, 80-165 Strokes/min, Wintress Autotest 1500 Plus Wireless Load Analyzer & Loading System
- (3) **STAMTEC** OCP-45 Gap Frame Punch Presses, OmniLink 805 Controller, Safety Guarding
- KOMATSU** OBP80 Punch Press, 80-Ton Cap.
- KOMATSU** H1F45 Servo Punch Press, 45-Ton Cap.
- BLOW** HNC-60 OBI Punch Press, 60-Ton Cap., 3.94" Stroke, 19.68" x 33.07" Bed, 80-120 Strokes/min
- BLOW** GC60 Double Crank Gap Punch Press
- (2) **FEDERAL** Model 5 OBI Punch Presses, 45-Ton Cap., 450mm x 800mm Bed, 30-60 Strokes/min, 80mm Adjust, s/n's 5-2434, N/A
- BROWN BOGGS** 1148-C Double Crank Gap Punch Press, 100-Ton Cap., 30" x 44.5" Ram, 30" x 72" Bed, s/n 6726
- BROWN BOGGS** 18LJA OBI Punch Press, 80-Ton Cap., 6" Stroke, 12.5" x 16.25" Shut Height, 18" x 24" Ram, 25.5" x 36" Bed, 42 Strokes/min
- (3) **BROWN BOGGS** OBI Punch Presses, 60-Ton Cap.
- SEI** MARK-28-W OBI Punch Press, 28-Ton Cap., 3.1" Stroke, 9.11" Shut Height, 12.6" x 27.6" Bed, 70-110 Strokes/min, Allen Bradley PanelView Plus 400 Control
- STANKO** KD2126K OBI Punch Press, s/n 106



PANASONIC ROBOTIC WELDING CELL



PARTIAL VIEW OF LINCOLN ELECTRIC WELDERS



(20) AVAILABLE



PARTIAL VIEW OF STAMTEC, KOMATSU, BLOW, FEDERAL, BROWN BOGGS PUNCH PRESSES

Visit
infinityassets.com
 for complete
 specifications.
 Bid Online at
BidSpotter.com



215+ TONS

400+ BUNDLES

PARTIAL VIEW OF 409/439/441 STAINLESS STEEL TUBE INVENTORY

ROLLING STOCK

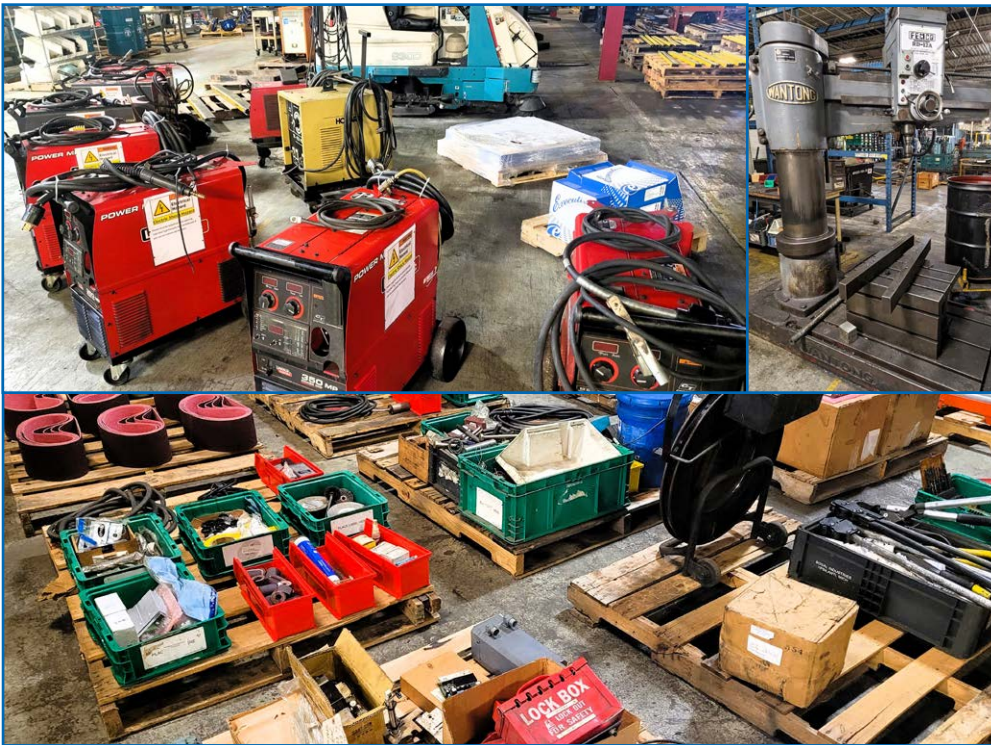
- HYUNDAI** HLF25-5 Propane Forklift, 4,000lb Cap., 3-Stage Mast, Side Shift, s/n FU0210180
- (2) **CATERPILLAR** 2ET3000 Electric Forklifts, 3,000lb Cap., 3-Stage Mast, Side-Shift, 3-Wheel, 48V
- MITSUBISHI** TX40M Electric Forklift, s/n AUB2650452

STAINLESS STEEL TUBE INVENTORY (215+ TONS)

(400+) Bundles of 409/439/441 Stainless Steel Tube, 192" x 2.75" / 2.5" / 2.36" OD

PLANT SUPPORT EQUIPMENT

- YOUIL** YGS-52A Surface Grinder, Heidenhain DRO, 550mm x 200mm Working Surface, 2HP, s/n 5291208
- CHEVALIER** FSG-618M Manual Surface Grinder, 6" x 18" Magnetic Chuck
- CHEVALIER** FSG-3A20 Surface Grinder
- FEMCO / WANTONG** RD-12A Radial Arm Drill, s/n 75-2137
- 4-Cylinder Piece Machine w/ 20HP Hydraulic Power Pack
- MULTICYCL** 8809 Pneumatic Dimple Press
- ULTRASONIC** UP4822 Power Washer, s/n 1113311
- (2) 2015 **YAKASAWA MOTOMAN** MH24T/YR-MH00024-A00 Robots, 24kg Cap., DX200 Controller
- MITUTOYO** BH710 CMM, Renishaw Probe, 48" x 64" Table, s/n N93070015008108108
- ATLAS COPCO** 100HP Air Compressor
- PARKER DOMINICK HUNTER** Air Dryer
- (11+) **PENTALIFT** Hydraulic Lift Tables, 4,000lb Cap., 50" x 50"



PARTIAL VIEW OF PLANT SUPPORT EQUIPMENT



TERMS OF SALE   

Payment: All payments must be in Cash, Certified Funds, Wire Transfers, or Company Cheques, which must be accompanied with a bank letter guaranteeing irrevocable payment to Infinity Asset Solutions Inc. Invoices up to \$2,000 can be paid by Visa, Mastercard or Interac.

All bidders must register on Bidspotter by Tuesday May 21st, 5pm.

A 18% buyers premium will be added to all Online purchases.

A \$2,000 refundable security deposit is required upon online registration.

A 25% deposit is required at time of purchase, balance due by Thursday May 23rd, 2024, 4pm. NO EXCEPTIONS.

All goods are sold "As Is, Where Is", ALL SALES ARE FINAL. All subject to prior sale. Complete terms and conditions including removal procedures, are available on our website.

REMOVAL TIMES

All items by Friday June 7th. No Exception.

NOTE: EXCLUSIVE RIGGING MAY APPLY, SEE INFINITYASSETS.COM FOR MORE DETAILS

This brochure is meant merely as a guide. Infinity Asset Solutions makes no guarantee, expressed or implied, as to the accuracy of the information in this brochure. Buyers should inspect the goods beforehand to satisfy themselves.



AUCTIONS • LIQUIDATIONS • FINANCING • APPRAISALS

63 Maplecrete Road, Concord, Ontario L4K 1A5 Canada

infinityassets.com • Tel: (905) 669-8893